

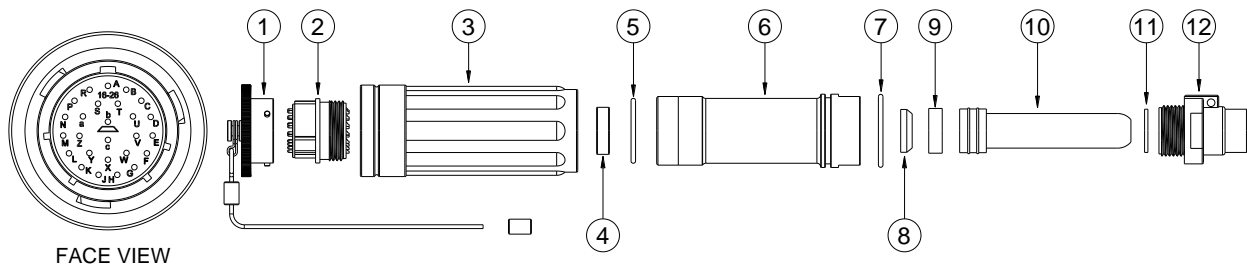


HGS (INDIA) LIMITED



26 PIN MALE CONN. ASSY.

SCHEMATIC



| | | |
|--------|-----------------------------------------------------------|--------|
| 12 | BOOT NUT | 01 No. |
| 11 | BOOT WASHER | 01 No. |
| 10 | CABLE BOOT | 01 No. |
| 9 | WASHER COLLET | 01 No. |
| 8 | COLLET | 01 No. |
| 7 | O-RING | 01 No. |
| 6 | CABLE HEAD MAIN BODY | 01 No. |
| 5 | O-RING | 01 No. |
| 4 | STRESS WAFER | 01 No. |
| 3 | COUPLING RING | 01 No. |
| 2 | 26 PIN MALE CONNECTOR INSERT WITH WATER BLOCKING COMPOUND | 01 No. |
| 1 | DUST CAP WITH WIRE ROPE & FERRULE | 01 No. |
| S. NO. | DESCRIPTION | QTY |

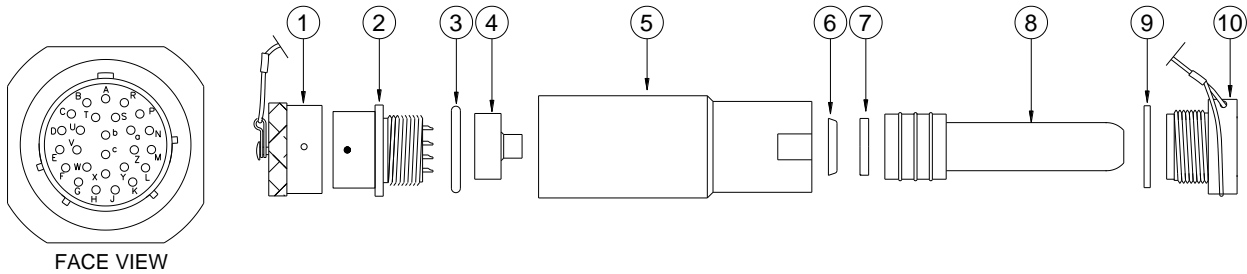


HGS (INDIA) LIMITED



26 PIN FEMALE CONN. ASSY.

SCHEMATIC



| | | |
|--------|-----------------------------------|--------|
| 10 | BOOT NUT | 01 No. |
| 9 | BOOT WASHER | 01 No. |
| 8 | CABLE BOOT | 01 No. |
| 7 | WASHER COLLET | 01 No. |
| 6 | COLLET | 01 No. |
| 5 | CONNECTOR BACK SHELL | 01 No. |
| 4 | CABLE ANCHOR | 01 No. |
| 3 | O-RING | 01 No. |
| 2 | 26 PIN FEMALE CONNECTOR INSERT | 01 No. |
| 1 | DUST CAP WITH WIRE ROPE & FERRULE | 01 No. |
| S. NO. | DESCRIPTION | QTY |



HGS (INDIA) LIMITED



Specifications

HGS 26 Pin Male & Female Field Installable Conn. Assy.

- End connector for Shallow Refraction Cables.
- Cable Capacity: 6.5 to 12.5 mm OD.
- Easily field repairable and water proof.
- Cable entry kit prevents rotational twist to conductors inside connector.
- Stress wafer to avoid stress on solder joints.
- Metal body for increased strength and use in rugged field condition.
- Fitted with dust cap.
- Operating Temperature Range: -20°C to +70°C.

Version 1.1