

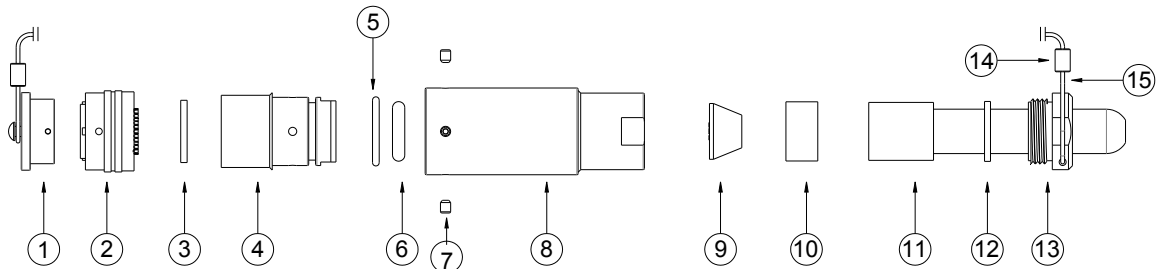


HGS (INDIA) LIMITED



26 PIN MALE CONN. ASSY.

SCHEMATIC



15	INSULATED WIRE ROPE, 100 LBS, DIA-1.5MM	32cm
14	CRIMP SLEEVE, OD-5.9MM x ID-3.15MM	2
13	CONN. SHELL NUT, ALUMINIUM, 26 PIN M CONN.	1
12	BOOT WASHER, 6 CONTACT MORPHO CONN.	1
11	CABLE BOOT, ID 8.84MM, 6 CONTACT MORPHO CONN.	1
10	WASHER COLLET, 6 CONTACT MORPHO CONN.	1
9	COLLET, 8.89MM CABLE, 6 CONTACT MORPHO CONN.	1
8	CONN. SHELL-B, ALUMINIUM, 26 PIN M CONN.	1
7	SET SCREW M4 x 5 hs.cp DIN 914 St.	4
6	STRESS WAFER, 6 CONTACT MORPHO CONN.	1
5	O-RING, 21.9x2.62MM	1
4	CONN. SHELL-A, ALUMINIUM, 26 PIN M CONN.	1
3	RUBBER GASKET, 26 PIN MALE CONN.	1
2	PLUG WITH STRAIGHT CABLE CLAMP	1
1	DUST CAP FOR PLUG WITH STRAIGHT CABLE CLAMP	1
SL. NO.	DESCRIPTION	QTY.

158, Sector-4, IMT Manesar, Gurgaon-122050 Haryana INDIA

Tel: +91 (0124) 4681800, Fax: +91 (0124) 4681845

Email: sales@hgsindia.com

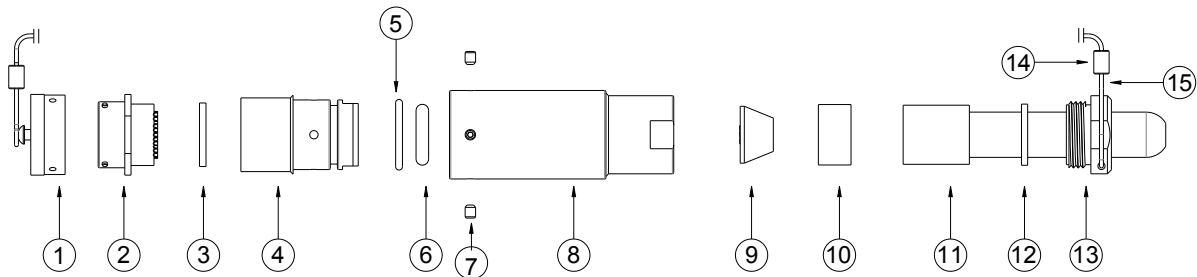


HGS (INDIA) LIMITED



26 PIN FEMALE CONN. ASSY.

SCHEMATIC



15	INSULATED WIRE ROPE, 100 LBS, DIA-1.5MM	32cm
14	CRIMP SLEEVE, OD-5.9MM x ID-3.15MM	2
13	CONN. SHELL NUT, ALUMINIUM, 26 PIN M CONN.	1
12	BOOT WASHER, 6 CONTACT MORPHO CONN.	1
11	CABLE BOOT, ID 8.84MM, 6 CONTACT MORPHO CONN.	1
10	WASHER COLLET, 6 CONTACT MORPHO CONN.	1
9	COLLET, 8.89MM CABLE, 6 CONTACT MORPHO CONN.	1
8	CONN. SHELL-B, ALUMINIUM, 26 PIN M CONN.	1
7	SET SCREW M4 x 5 hs.cp DIN 914 St.	4
6	STRESS WAFER, 6 CONTACT MORPHO CONN.	1
5	O-RING, 21.9x2.62MM	1
4	CONN. SHELL-A, ALUMINIUM, 26 PIN M CONN.	1
3	RUBBER GASKET, 26 PIN MALE CONN.	1
2	CABLE MOUNTING RECEPTACLE	1
1	DUST CAP FOR CABLE MOUNTING RECEPTACLE	1
SL. NO.	DESCRIPTION	QTY.

158, Sector-4, IMT Manesar, Gurgaon-122050 Haryana INDIA
 Tel: +91 (0124) 4681800, Fax: +91 (0124) 4681845
 Email: sales@hgsindia.com



HGS (INDIA) LIMITED



SPECIFICATIONS

HGS 26 Pin Male & Female Field Installable Conn. Assy.

- End connector for Shallow Refraction Cables
- Cable Capacity: 6.5 to 12.5 mm OD
- Easily field repairable and water proof
- Cable entry kit prevents rotational twist to conductors inside connector
- Stress wafer to avoid stress on solder joints
- Metal body for increased strength and use in rugged field condition
- Fitted with dust cap
- Operating Temperature Range: -20°C to +70°C
- Pressure Rating: Up to 2 bar

158, Sector-4, IMT Manesar, Gurgaon-122050 Haryana INDIA
Tel: +91 (0124) 4681800, Fax: +91 (0124) 4681845
Email: sales@hgsindia.com