

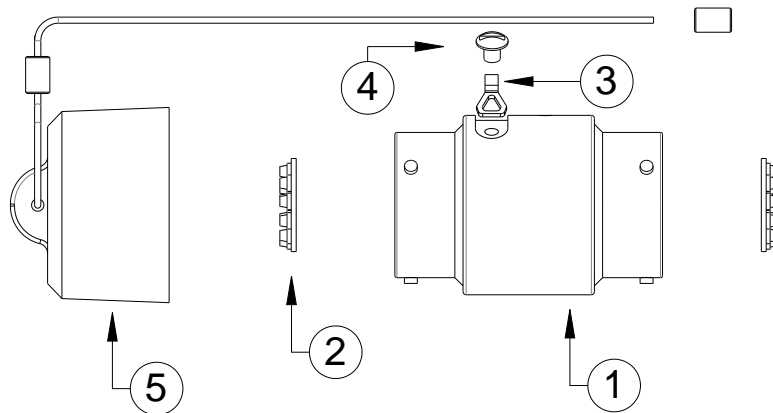


# HGS (INDIA) LIMITED



## HGS-16 Pin Male Back to Back Connector

### SCHEMATIC



5	DUST CAP SUB ASSY., 16 PIN B2B M CONN.	01 No.
4	PAN HEAD SCREW, M4x0.7MM, 4.50MM LONG	02 Nos.
3	INSU. WIRE ROPE HOLDING CLIP, 16 PIN B2B CONN.	01 No.
2	CONICAL WASHER, 16 PIN M B2B CONN.	02 Nos.
1	16 PIN BACK TO BACK CONN. SUB ASSY.	01 No.
SL. NO.	DESCRIPTION	QTY.



# HGS (INDIA) LIMITED



## SPECIFICATIONS

### HGS-16 Pin Male Back to Back Connector

- HGS-16 pin male back to back connector fitted with dust caps
- Easily field repairable
- Metal body for increased strength and use in rugged field condition
- Operating Temperature Range: -20°C to +70°C
- Pressure Rating: Up to 3 bar

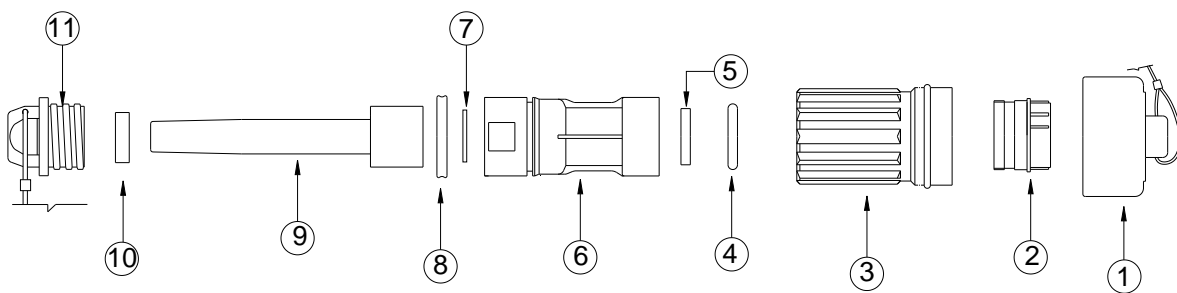


# HGS (INDIA) LIMITED



## HGS-16 PIN FEMALE CONNECTOR

### SCHEMATIC



11	BOOT NUT, BLACK, HGS-16F CONN.	01 No.
10	BOOT WASHER, HGS-16F CONN.	01 No.
9	CABLE BOOT, 8.5MM CABLE DIA, HGS-16F CONN.	01 No.
8	QUADRING, ID 33.5 X 2.6MM THK, HGS-16F CONN.	01 No.
7	ALUMINIUM WASHER, HGS-16F CONN.	01 No.
6	CONN. BODY SUB ASSY., HGS-16F CONN., THK-W, BLACK	01 No.
5	STRESS WAFER	01 No.
4	O-RING, 25X3.6MM, HGS-16F CONN.	01 No.
3	COUPLING RING, BLUE, HGS-16 PIN F CONN.	01 No.
2	16 PIN F CONN. INSERT	01 No.
1	DUST CAP SUB ASSY. WITH WIRE ROPE & FERRULE, HGS-16F CONN.	01 No.
SL. NO.	DESCRIPTION	QTY



# HGS (INDIA) LIMITED



## SPECIFICATIONS

### HGS-16 Pin Female Connector

- HGS-16 pin female connector fitted with dust cap
- Cable Capacity – 6.5 to 9mm OD
- Easily field repairable
- Impact resistant material
- Cable entry kit prevents rotational twist to conductors inside connector
- Stress wafer to avoid stress on solder joints
- Operating Temperature Range: -20°C to +70°C
- Pressure Rating: Up to 3 bar

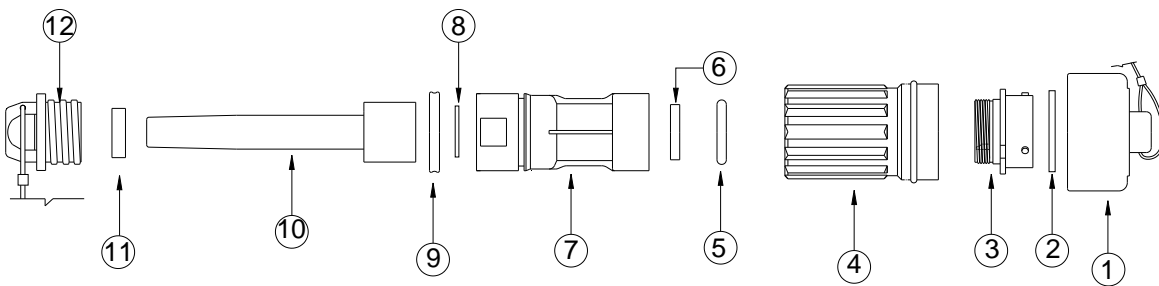


# HGS (INDIA) LIMITED



## HGS-16 PIN MALE CONNECTOR

### SCHEMATIC



12	BOOT NUT, BLACK, HGS-16F CONN.	01 No.
11	BOOT WASHER, HGS-16F CONN.	01 No.
10	CABLE BOOT, 8.5MM CABLE DIA, HGS-16F CONN.	01 No.
9	QUADRING, ID 33.5 X 2.6MM THK, HGS-16F CONN.	01 No.
8	ALUMINIUM WASHER, HGS-16F CONN.	01 No.
7	CONN. BODY SUB ASSY., HGS-16M CONN., THK-W, BLACK	01 No.
6	STRESS WAFER	01 No.
5	O-RING, 25X3.6MM, HGS-16F CONN.	01 No.
4	COUPLING RING, BLUE, HGS-16 PIN M CONN.	01 No.
3	16 PIN M CONN. INSERT	01 No.
2	HGS-16 SEAL, HGS-16M	
1	DUST CAP SUB ASSY. WITH WIRE ROPE & FERRULE, HGS-16F CONN.	01 No.
SL. NO.	DESCRIPTION	QTY



# HGS (INDIA) LIMITED



## SPECIFICATIONS

### HGS-16 Pin Male Connector

- HGS-16 pin male connector fitted with dust cap
- Cable Capacity – 6.5 to 9mm OD.
- Easily field repairable
- Impact resistant material
- Cable entry kit prevents rotational twist to conductors inside connector
- Stress wafer to avoid stress on solder joints
- Operating Temperature Range: -20°C to +70°C
- Pressure Rating: Up to 3 bar